



THUR AND FRI REPORT

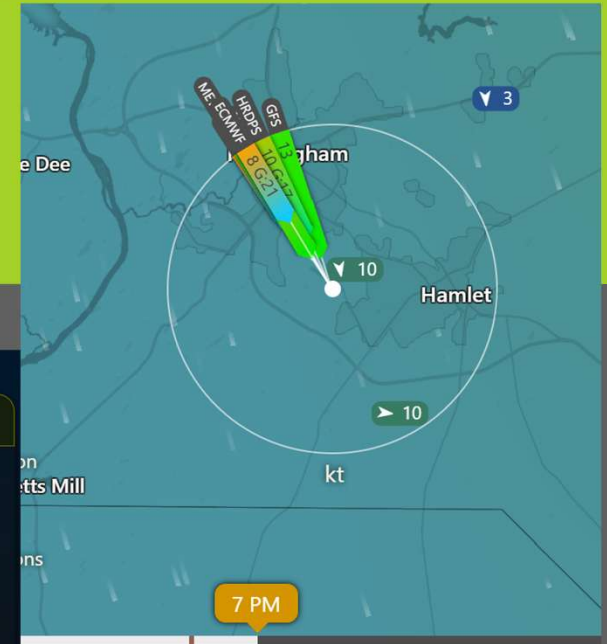
Parajam 2026

Richmond County Airfield

Rockingham NC

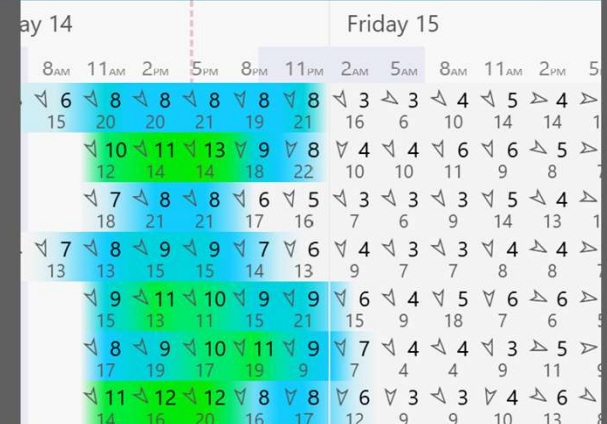
THUR WEATHER REPORT

SUNRISE: 6:20AM SUNSET: 8:10PM



| 6:00p | | | | 7:00p | | | | 8:00p | | | |
|--------------|-------|-----------|--------|--------------|-------|-----------|--------|--------------|-------|-----------|--------|
| CIN 0 CAPE 0 | | | | CIN 0 CAPE 0 | | | | CIN 0 CAPE 0 | | | |
| 2% 13G18 | | | | 3% 10G17 | | | | 2% 9G17 | | | |
| ALT. (AGL) | TEMP | DIRECTION | SPEED | ALT. (AGL) | TEMP | DIRECTION | SPEED | ALT. (AGL) | TEMP | DIRECTION | SPEED |
| Surface | 72 °F | 328 ↓ | 14 mph | Surface | 70 °F | 339 ↓ | 12 mph | Surface | 67 °F | 348 ↓ | 11 mph |
| 100 ft | 70 °F | 328 ↓ | 16 mph | 100 ft | 68 °F | 339 ↓ | 14 mph | 100 ft | 65 °F | 349 ↓ | 14 mph |
| 250 ft | 68 °F | 328 ↓ | 18 mph | 250 ft | 66 °F | 339 ↓ | 17 mph | 250 ft | 64 °F | 349 ↓ | 18 mph |
| 500 ft | 67 °F | 341 ↓ | 19 mph | 500 ft | 65 °F | 347 ↓ | 19 mph | 500 ft | 64 °F | 352 ↓ | 19 mph |
| 750 ft | 66 °F | 328 ↓ | 20 mph | 750 ft | 65 °F | 339 ↓ | 19 mph | 750 ft | 64 °F | 346 ↓ | 22 mph |
| 1,000 ft | 65 °F | 328 ↓ | 20 mph | 1,000 ft | 64 °F | 339 ↓ | 19 mph | 1,000 ft | 62 °F | 346 ↓ | 22 mph |

Sky Clear Winds from NE 8 mp with 15 mph gusts



PPG Report

Windy

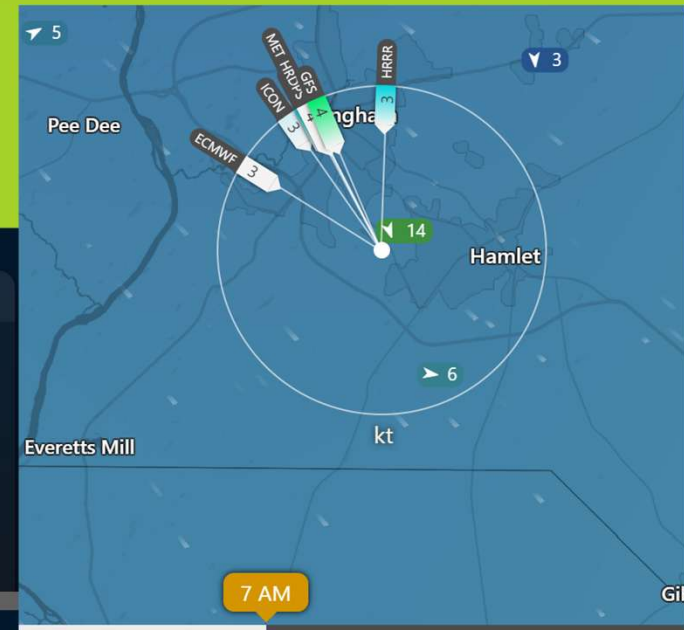
FRI WEATHER REPORT

SUNRISE: 6:20AM

SUNSET: 8:10PM

| 6:00a ⁺¹ | | | | 7:00a ⁺¹ | | | | 8:00a ⁺¹ | | | |
|---------------------|-------|-----------|--------|---------------------|-------|-----------|--------|---------------------|-------|-----------|--------|
| CIN 0 CAPE 0 | | | | CIN 0 CAPE 0 | | | | CIN 0 CAPE 0 | | | |
| 1% 3G8 | | | | 2% 3G8 | | | | 1% 6G10 | | | |
| ALT. (AGL) | TEMP | DIRECTION | SPEED | ALT. (AGL) | TEMP | DIRECTION | SPEED | ALT. (AGL) | TEMP | DIRECTION | SPEED |
| Surface | 47 °F | 311 ↘ | 4 mph | Surface | 48 °F | 331 ↘ | 5 mph | Surface | 55 °F | 321 ↘ | 5 mph |
| 100 ft | 48 °F | 329 ↘ | 7 mph | 100 ft | 49 °F | 338 ↘ | 8 mph | 100 ft | 54 °F | 324 ↘ | 5 mph |
| 250 ft | 49 °F | 339 ↘ | 12 mph | 250 ft | 49 °F | 342 ↘ | 14 mph | 250 ft | 52 °F | 327 ↘ | 7 mph |
| 500 ft | 52 °F | 345 ↘ | 18 mph | 500 ft | 52 °F | 344 ↘ | 18 mph | 500 ft | 53 °F | 345 ↘ | 16 mph |
| 750 ft | 54 °F | 352 ↘ | 21 mph | 750 ft | 54 °F | 352 ↘ | 21 mph | 750 ft | 54 °F | 356 ↘ | 18 mph |
| 1,000 ft | 53 °F | 356 ↘ | 21 mph | 1,000 ft | 53 °F | 357 ↘ | 21 mph | 1,000 ft | 54 °F | 7 ↓ | 17 mph |
| 1,500 ft | 51 °F | 1 ↓ | 24 mph | 1,500 ft | 51 °F | 1 ↓ | 22 mph | 1,500 ft | 52 °F | 11 ↓ | 19 mph |
| 2,000 ft | 49 °F | 4 ↓ | 25 mph | 2,000 ft | 49 °F | 4 ↓ | 23 mph | 2,000 ft | 50 °F | 13 ↓ | 19 mph |

| 9:00a ⁺¹ | | | | 10:00a ⁺¹ | | | | 11:00a ⁺¹ | | | |
|---------------------|-------|-----------|--------|----------------------|-------|-----------|--------|----------------------|-------|-----------|--------|
| CIN 0 CAPE 0 | | | | CIN 0 CAPE 0 | | | | CIN 0 CAPE 0 | | | |
| 1% 6G8 | | | | 1% 6G8 | | | | 1% 5G9 | | | |
| ALT. (AGL) | TEMP | DIRECTION | SPEED | ALT. (AGL) | TEMP | DIRECTION | SPEED | ALT. (AGL) | TEMP | DIRECTION | SPEED |
| Surface | 61 °F | 353 ↘ | 5 mph | Surface | 65 °F | 9 ↓ | 6 mph | Surface | 68 °F | 357 ↓ | 5 mph |
| 100 ft | 59 °F | 353 ↘ | 6 mph | 100 ft | 63 °F | 9 ↓ | 6 mph | 100 ft | 66 °F | 357 ↓ | 5 mph |
| 250 ft | 57 °F | 354 ↘ | 6 mph | 250 ft | 60 °F | 9 ↓ | 7 mph | 250 ft | 63 °F | 358 ↓ | 6 mph |
| 500 ft | 55 °F | 345 ↘ | 14 mph | 500 ft | 58 °F | 342 ↘ | 10 mph | 500 ft | 60 °F | 346 ↓ | 10 mph |
| 750 ft | 54 °F | 354 ↘ | 13 mph | 750 ft | 57 °F | 355 ↘ | 8 mph | 750 ft | 59 °F | 355 ↓ | 7 mph |
| 1,000 ft | 54 °F | 8 ↓ | 11 mph | 1,000 ft | 57 °F | 12 ↓ | 8 mph | 1,000 ft | 59 °F | 2 ↓ | 6 mph |
| 1,500 ft | 52 °F | 12 ↓ | 13 mph | 1,500 ft | 54 °F | 13 ↓ | 9 mph | 1,500 ft | 56 °F | 2 ↓ | 6 mph |
| 2,000 ft | 50 °F | 14 ↓ | 15 mph | 2,000 ft | 52 °F | 13 ↓ | 9 mph | 2,000 ft | 54 °F | 1 ↓ | 7 mph |



| Friday 15 | | | | | | Saturday 16 | | |
|-----------|-------|------|------|------|-------|-------------|------|------|
| 8 PM | 11 PM | 2 AM | 5 AM | 8 AM | 11 AM | 2 PM | 5 PM | 8 AM |
| 8 | 8 | 3 | 3 | 4 | 5 | 4 | 3 | 5 |
| 1 | 19 | 21 | 16 | 6 | 10 | 14 | 14 | 13 |
| 13 | 9 | 8 | 4 | 4 | 6 | 5 | 5 | 2 |
| 4 | 18 | 22 | 10 | 10 | 11 | 9 | 8 | 7 |
| 8 | 6 | 5 | 3 | 3 | 3 | 5 | 4 | 3 |
| 1 | 17 | 16 | 7 | 6 | 9 | 14 | 13 | 11 |
| 9 | 7 | 6 | 4 | 3 | 4 | 4 | 3 | 2 |
| 5 | 14 | 13 | 9 | 7 | 7 | 8 | 7 | 4 |
| 10 | 9 | 9 | 6 | 4 | 5 | 6 | 6 | 4 |
| 1 | 15 | 21 | 15 | 9 | 18 | 7 | 6 | 5 |
| 10 | 11 | 9 | 7 | 4 | 4 | 3 | 5 | 3 |
| 7 | 19 | 9 | 7 | 4 | 4 | 9 | 11 | 9 |
| 12 | 8 | 8 | 6 | 3 | 3 | 4 | 6 | 4 |
| 0 | 16 | 17 | 12 | 9 | 9 | 10 | 13 | 8 |

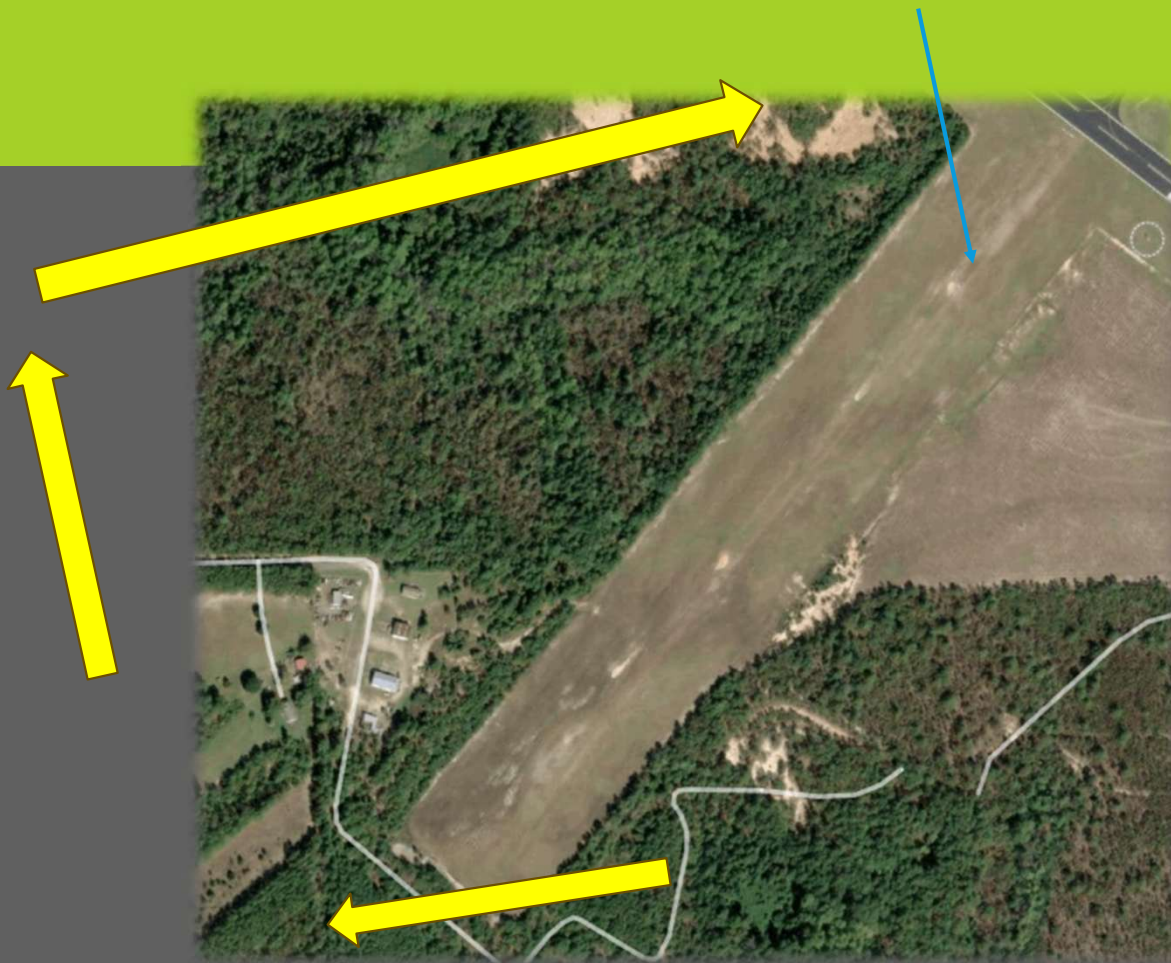
PPG Report

Windy

Sky Clear Winds from NE 5mph

RECOMMENDED PATTERN

Wind 350deg 6-9mph



Recommended
Pattern

AIRFIELD RESTRICTIONS

After Takeoff Plan on
Departing the area to
allow others to get
airborne

NO flying beyond
Windsock towards
asphalt Runway unless
above 2500ft.

Do not be within 1mi
extended centerline of
end asphalt runway

Watch out for sand
cactus if toe dragging
(heel drag)



AIRSPACE RESTRICTIONS

No flying inside Quarry,
you may not get out

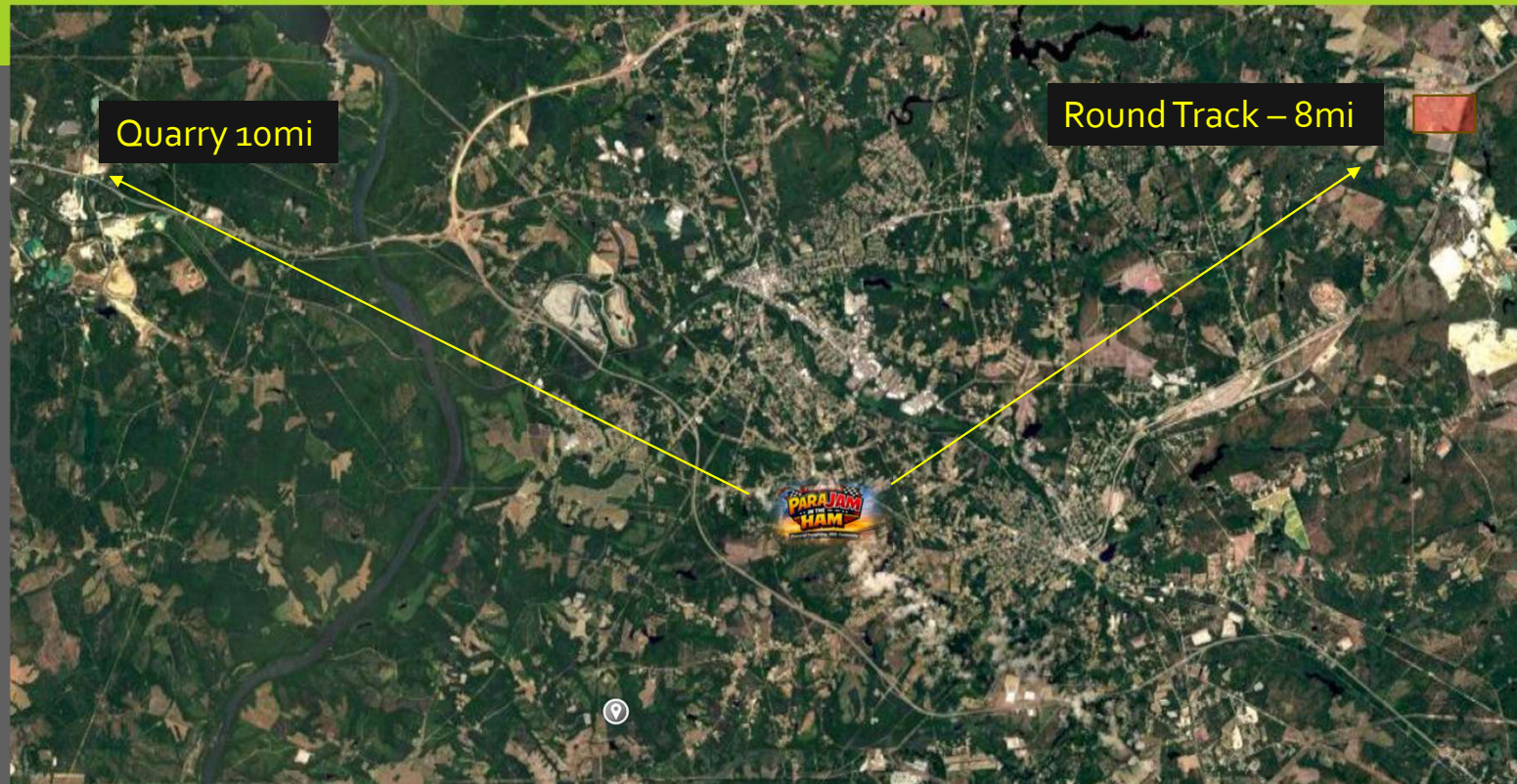
No flying inside
Rockingham Race Track

Clear Flight Path! Do not
cut someone off when
they are preparing to
land.

Be Courteous of other
Pilots

FAA rules apply

Notams:



MARSHALLER SIGNALS – SAFETY VESTS AND WANDS

- They are there to help!
- They will be checking for Wristband
- Any unsafe activities, Marshaller can give a warning or ask you to leave the flightline.
- Common Signals:

POINT AT YOU FIRST



Green Stick =
Clear Takeoff/Land



Pink Stick =
Do NOT
Takeoff/Land

- If they are busy helping someone, clear own flight path, do not be a problem for someone else
- After landings, gather gear and go to side of flightline

MEDICAL EMERGENCIES

- Medical Mishaps on Airfield – Marshalls will relay to Med staff on site
- AED located at Medical Tent
- Mishap off Airfield – Call Emergency number 910-434-5212
 - If Hurt or Stuck in a Tree/Powerlines – County Rescue crew will respond
 - If not Hurt – Alert Volunteer will pick you up
- Text message if Emergency happening and airlift needed will go out. Clear path for helo help!!!

FRIDAY EVENTS

| Friday 15 May | | | |
|---------------|--|------------------|------------|
| Time | Event | POC | Location |
| 11:00 AM | Engine Maintenance | Neil Wight | Event Tent |
| 12:00 PM | <i>Parajet Meet the Team & User Support Tips & Tricks + Safety Bulletins</i> | David Hagelthorn | Event Tent |
| | PPG and Drones | | |
| 2:00 PM | | | |
| 3:00 PM | Vittorazi | Vittorazi | Event Tent |
| 4:00 PM | | | |
| 5:00 PM | Pilot Meeting | Staff | Event Tent |

Food Trucks:

BBQ
Taco
Kona Ice



PARAJAM ENTRANCE:
195 James Hand Rd
Rockingham NC



LEGEND:

- Sponsor Tents
- Food, **Medical** & Event Tent
- Camping Areas
- Vehicle Path
- Flightline – Designated vehicles only inside
- Port-A-Johns
- Water Spicket
- Registration and Help
- Trash Drop-off
- Daily Parking

Emergency Phone: 910-434-5212

HAVE A BLAST AND BE SAFE

- Clean up after your pets, don't need land mines!
- POST YOUR PICS!
#Parajam and #parajam2026

